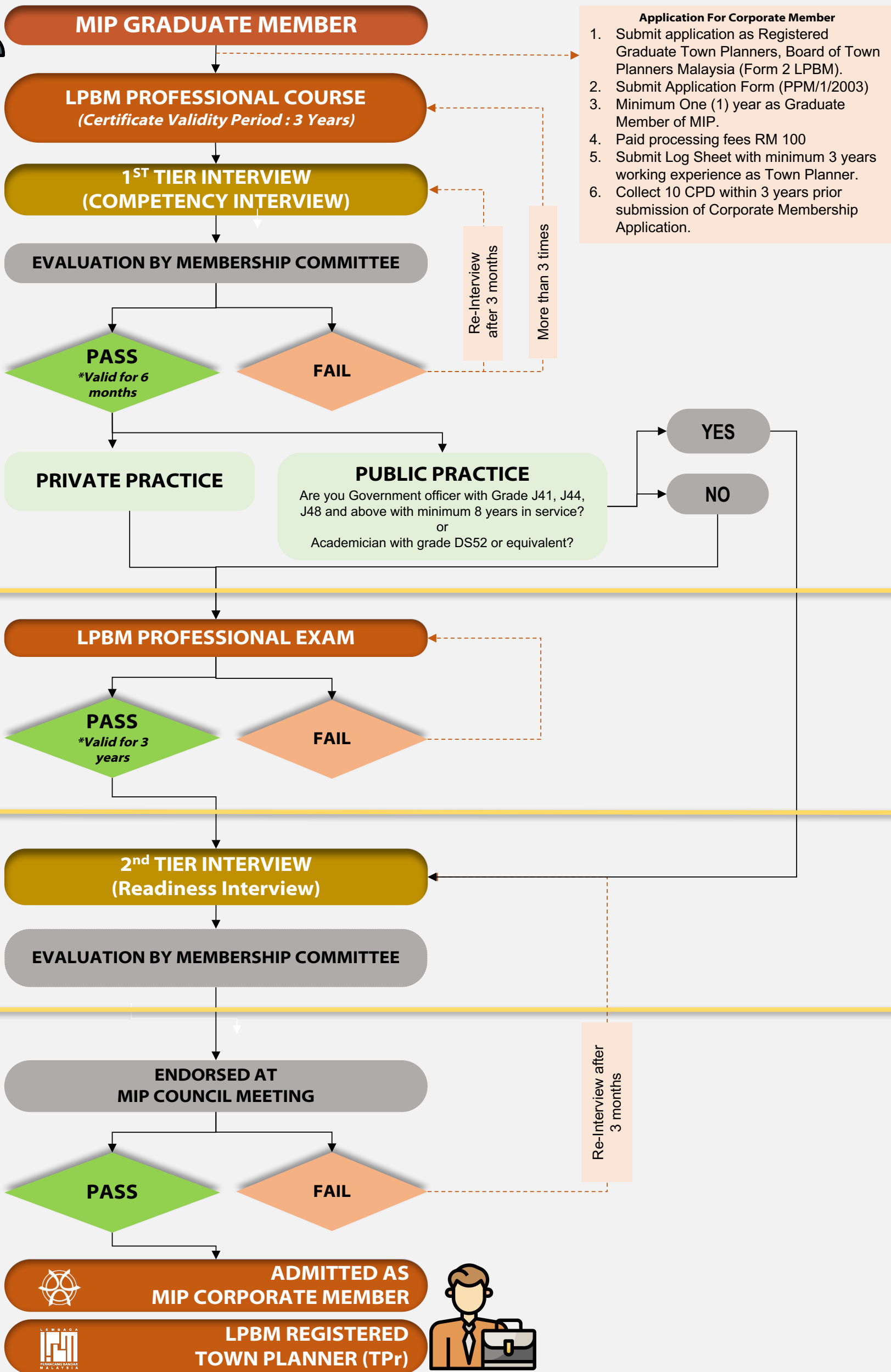


# STEPS TO BECOME MIP CORPORATE MEMBERS



- Application For Corporate Member**
1. Submit application as Registered Graduate Town Planners, Board of Town Planners Malaysia (Form 2 LPBM).
  2. Submit Application Form (PPM/1/2003)
  3. Minimum One (1) year as Graduate Member of MIP.
  4. Paid processing fees RM 100
  5. Submit Log Sheet with minimum 3 years working experience as Town Planner.
  6. Collect 10 CPD within 3 years prior submission of Corporate Membership Application.

**PART 1**

1) COURSE  
2) INTERVIEW

---

**PART 2**

1) EXAM

---

**PART 3**

1) INTERVIEW

---

**PART 4**

1) ENDORSEMENT

**ADMITTED AS MIP CORPORATE MEMBER**

**LPBM REGISTERED TOWN PLANNER (TPr)**

